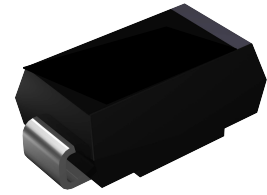


# SR2A thru SR2M

Fast Recovery Surface Mount Rectifiers  
Reverse Voltage 50 to 1000 Volts Forward Current 2.0 Amperes

## Features

- ◆ Glass passivated junction chip
- ◆ For surface mounted application
- ◆ Low forward voltage drop
- ◆ Low profile package
- ◆ Built-in strain relief, ideal for automated placement
- ◆ Fast switching for high efficiency
- ◆ High temperature soldering: 260°C/10 seconds at terminals
- ◆ Plastic package has Underwriters Laboratory Flammability Classification 94V-0



Package: DO-214AA (SMB)

## Mechanical Data

- ◆ Case: Molded plastic
- ◆ Terminals: Solder plated
- ◆ Polarity: Indicated by cathode end
- ◆ Weight: 0.003ounce, 0.093gram

## Electrical Characteristics (T<sub>A</sub>=25°C unless otherwise noted)

Parameter	Symbols	SR2A	SR2B	SR2D	SR2G	SR2J	SR2K	SR2M	Units
Maximum Repetitive Peak Reverse Voltage	V <sub>RRM</sub>	50	100	200	400	600	800	1000	Volts
Maximum RMS Voltage	V <sub>RMS</sub>	35	70	140	280	420	560	700	Volts
Maximum DC Blocking Voltage	V <sub>DC</sub>	50	100	200	400	600	800	1000	Volts
Maximum Average Forward Rectified Current T <sub>L</sub> =100°C	I <sub>F(AV)</sub>	2.0							Amps
Peak Forward Surge Current (8.3ms single half sine-wave superimposed on rated load) (JEDEC Method)	I <sub>FSM</sub>	50.0							Amps
Maximum Instantaneous Forward Voltage at 2A	V <sub>F</sub>	1.35							Volts
Maximum DC Reverse Current at Rated DC Blocking Voltage	@ T <sub>A</sub> =25°C	5.0							uA
	@ T <sub>A</sub> =125°C	200							
Typical Reverse Recovery Time at I <sub>F</sub> =0.5A, I <sub>R</sub> =1.0A, I <sub>RR</sub> =0.25A	T <sub>RR</sub>	150				250	500		nS
Typical Junction Capacitance at 4.0V, 1MHz	C <sub>J</sub>	50							pF
Typical Thermal Resistance(Note 1)	R <sub>THJA</sub>	55							°C/W
	R <sub>THJL</sub>	18							
Operating Junction Temperature Range	T <sub>J</sub>	-55 to +150							°C
Storage Temperature Range	T <sub>STG</sub>	-55 to +150							°C

Notes: 1. Thermal resistance from junction to ambient and from junction to lead frame P.C.B. mounted on 0.3×0.3"(8.0×8.0mm) copper pad areas.

# SR2A thru SR2M

Fast Recovery Surface Mount Rectifiers

SEMICONDUCTOR

Reverse Voltage 50 to 1000 Volts Forward Current 2.0 Amperes

## Typical Electrical Characteristic Curves

FIG.1- MAXIMUM FORWARD CURRENT DERATING CURVE

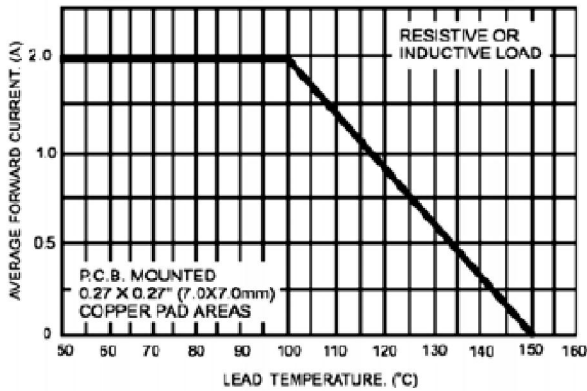


FIG.2- MAXIMUM NON-REPETITIVE PEAK FORWARD SURGE CURRENT

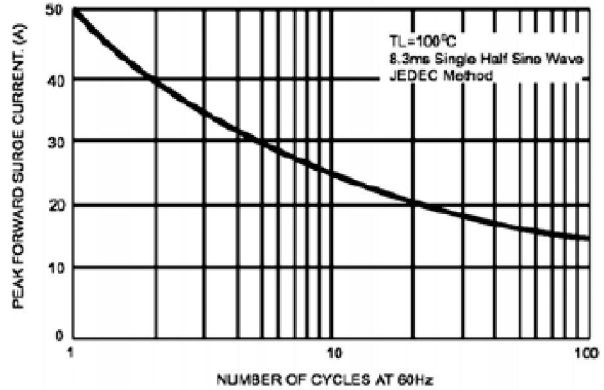


FIG.3- TYPICAL INSTANTANEOUS FORWARD CHARACTERISTICS

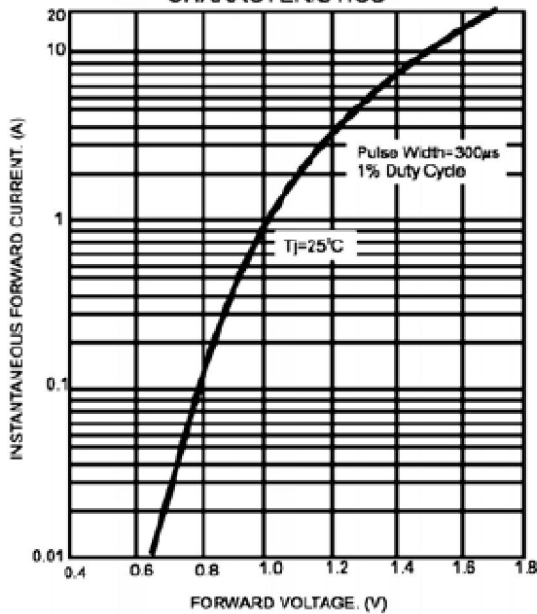


FIG.4- TYPICAL REVERSE CHARACTERISTICS

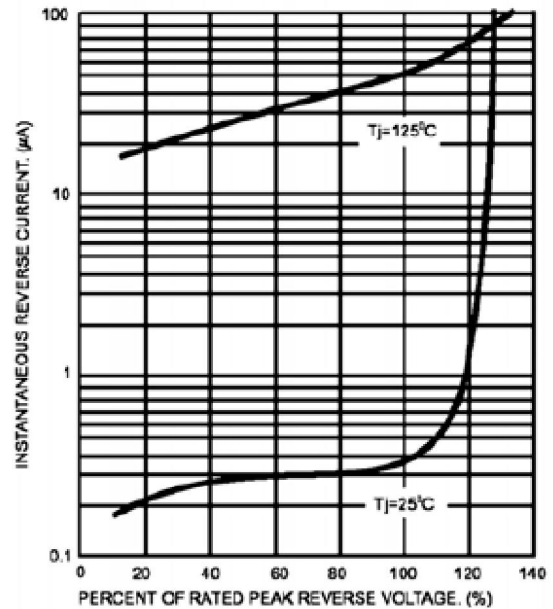
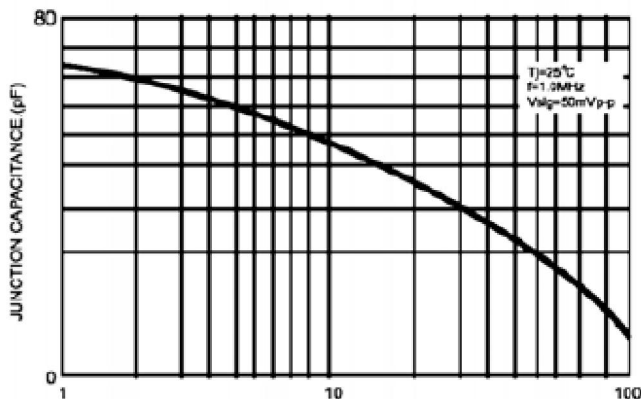


FIG.5- TYPICAL JUNCTION CAPACITANCE



# SR2A thru SR2M

Fast Recovery Surface Mount Rectifiers  
Reverse Voltage 50 to 1000 Volts Forward Current 2.0 Amperes

## Package Outline Dimensions

DO-214AA (SMB)

Dimensions in inches and (millimeters)

