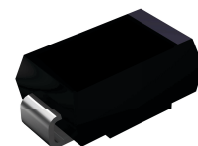


Features

- Glass passivated standard rectifiers
- Ideal for automated placement
- Low forward voltage drop
- High forward surge capability
- Moisture sensitivity: level 1, per J-STD-020
- AEC-Q101 qualified



DO-214AC(SMA)


RoHS
 COMPLIANT

Typical Applications

- For use of general purpose rectification in lighting, cellular phone, portable device,

Mechanical Data

- Case:DO-214AC, molded epoxy body, Epoxy meets UL 94V-0 flammability rating
- Terminal: Matte tin plated leads, solderable per J-STD-002 and JESD22B-106
- Polarity: Indicated by cathode band

Absolute Maximum Ratings and Electrical Characteristics

 (single-phase, half-wave, 60HZ, $T_A=25^{\circ}\text{C}$ unless otherwise noted)

Parameter	Symbol	V1	V2	V3	V4	V5	V6	V7	Unit
Maximum Repetitive Peak Reverse Voltage	V_{RRM}	50	100	200	400	600	800	1000	V
Maximum RMS Voltage	V_{RMS}	35	70	140	280	420	560	700	V
Maximum DC Blocking Voltage	V_{DC}	50	100	200	400	600	800	1000	V
Maximum Average Forward Rectified Current	$I_{F(AV)}$	1.0							A
Peak Forward Surge Current (8.3 ms single half sine-wave superimposed on rated load)	I_{FSM}	30.0							A
Maximum Forward Voltage at $I_F=1.0A$	V_F	1.0							V
Maximum DC Reverse Current @ $T_a=25^{\circ}\text{C}$ at rated DC Blocking Voltage @ $T_a=125^{\circ}\text{C}$	I_R	5.0							uA
		50.0							
Typical Junction Capacitance(Note1)	C_J	10.0							pF
Typical Thermal Resistance(Note2)	$R_{\theta JA}$	75.0							$^{\circ}\text{C/W}$
Typical Thermal Resistance(Note2)	$R_{\theta JL}$	20.0							$^{\circ}\text{C/W}$
Operating Junction and Storage Temperature Range	T_J T_{STG}	- 55 to + 150							$^{\circ}\text{C}$

Notes:1.Measured at 1.0MHz and applied reverse voltage of 4.0 D.C.

 2.Thermal resistance from junction to lead, 0.197×0.197 " (5.0×5.0mm) copper pads to each terminal

Ratings and Characteristics Curves

($T_A = 25^\circ\text{C}$ unless otherwise noted)

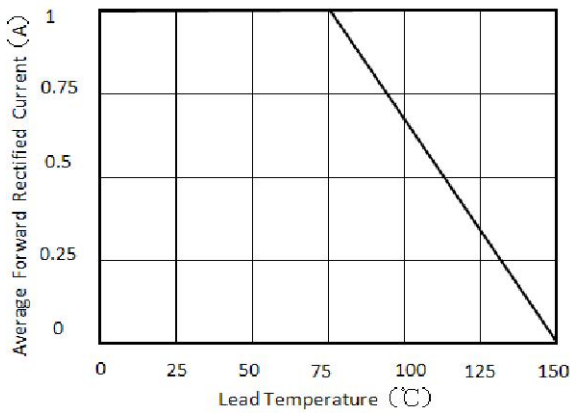


Figure 1. Forward Current Derating Curve

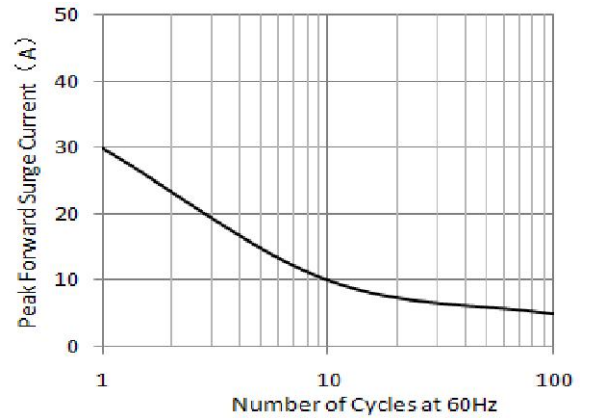


Figure 2. Maximum Non-Repetitive Peak Forward Surge Current

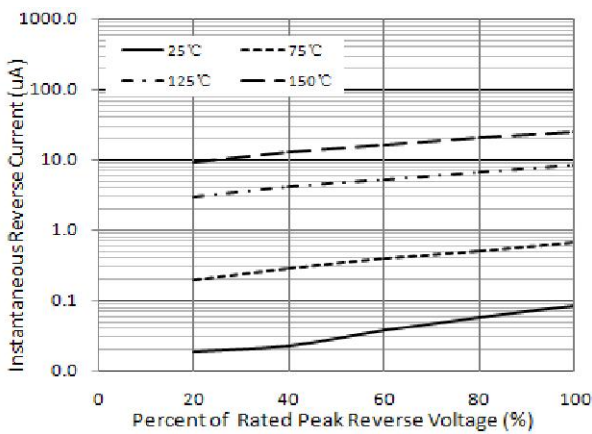


Figure 3. Typical Reverse Characteristics

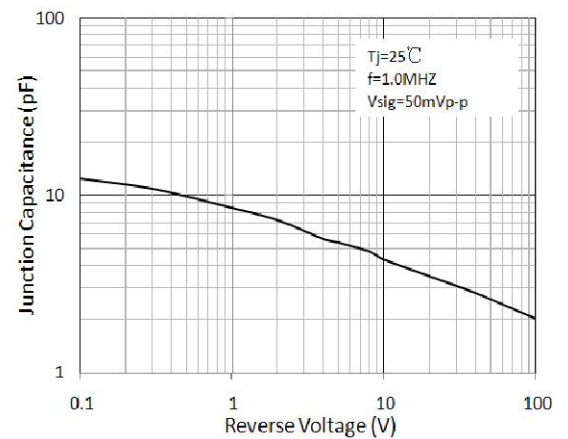


Figure 4. Typical Junction Capacitance

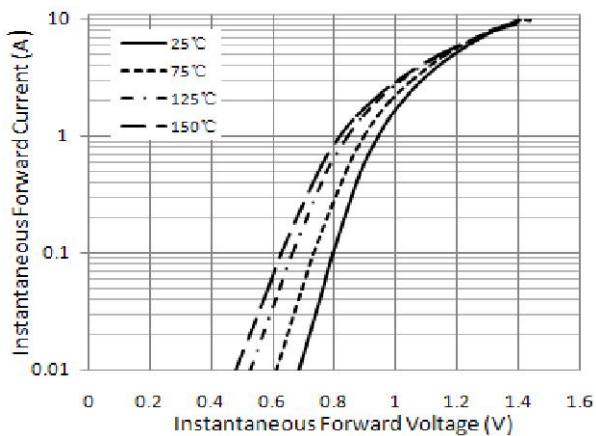
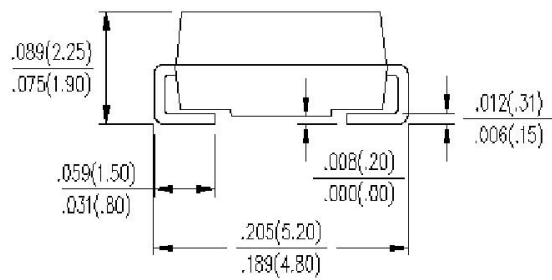
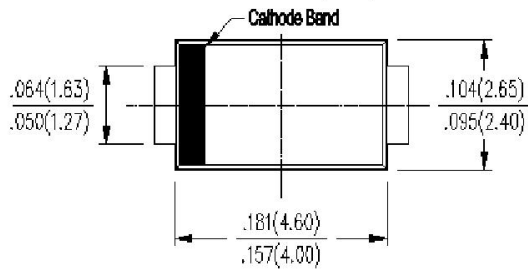


Figure 5. Typical Instantaneous Forward Characteristics

Package Outline Dimensions in inches (millimeters)

DO-214AC(SMA)



MOUNTING PAD LAYOUT

