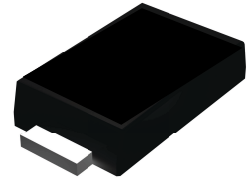


Features

- Glass passivated standard rectifiers
- Ideal for automated placement
- Low forward voltage drop
- Low leakage current
- **Moisture sensitivity: level 1, per J-STD-020**
- Solder dip 260°C, 10 seconds
- Low profile



Package: eSGB (SMAF)

Applications

For use of general purpose rectification in lighting, cellular phones, portable devices, power supplies, and other consumer applications.



Maximum Ratings (T_A=25°C unless otherwise specified)

Parameter	Symbol	L1A	L2A	L3A	L4A	L5A	L6A	L7A	Unit
Maximum Repetitive Peak Reverse Voltage	V _{RRM}	50	100	200	400	600	800	1000	V
Maximum RMS Voltage	V _{RMS}	35	70	140	280	420	560	700	V
Maximum DC Blocking Voltage	V _{DC}	50	100	200	400	600	800	1000	V
Maximum Average Forward Rectified Current at T _L (See Fig.1)	I _{F(AV)}	1.0							A
Peak Forward Surge Current (8.3 ms single half sine-wave superimposed on rated load)	I _{FSM}	30							A
Operating Junction and Storage Temperature	T _J , T _{STG}	- 55 to + 150							°C

Electrical Characteristics (T_A=25°C unless otherwise specified)

Parameter	Test Conditions	Symbol	L1A	L2A	L3A	L4A	L5A	L6A	L7A	Unit
Maximum Instantaneous Forward Voltage	1 A	V _F	1.1						V	
Maximum DC Reverse Current at rated DC Blocking Voltage	T _A =25°C	I _R	5						µA	
	T _A =125°C		50							
Typical Reverse Recovery Time	I _F =0.5A, I _R =1.0A,	t _{rr}	1.8						µs	
	I _{rr} =0.25A									
Typical Junction Capacitance	4.0 V, 1 MHz	C _J	6						pF	

Ratings and Characteristic Curves

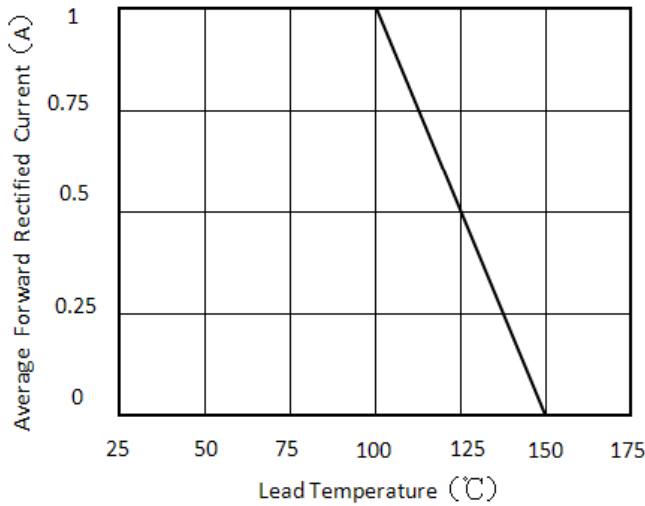


Figure 1. Forward Current Derating Curve

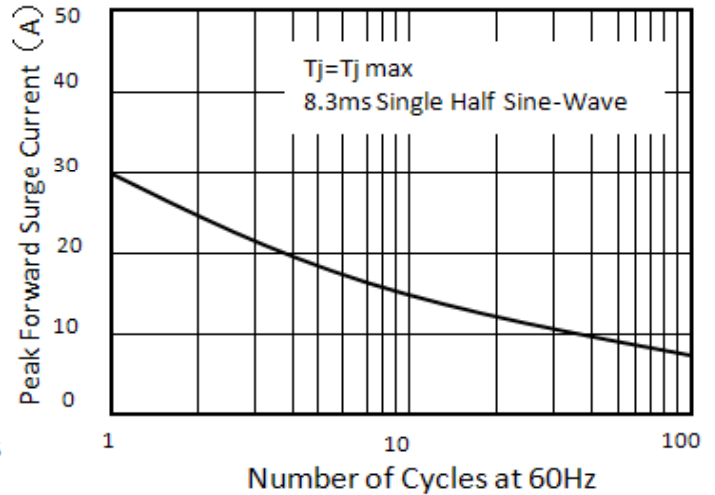


Figure 2. Maximum Non-Repetitive Peak Forward Surge Current

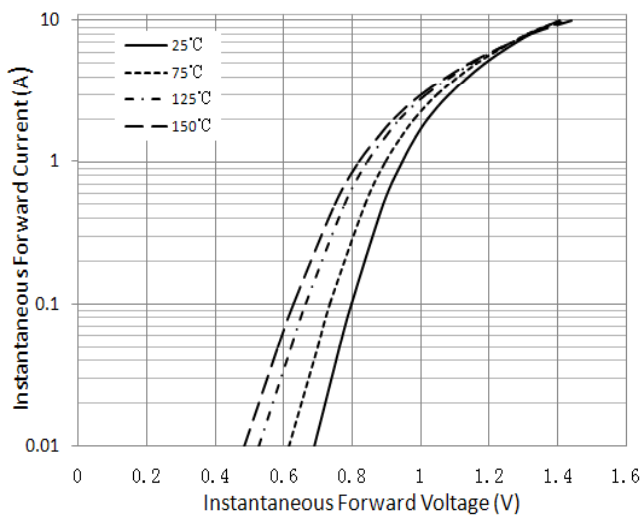


Figure 3. Typical Instantaneous Forward Characteristics

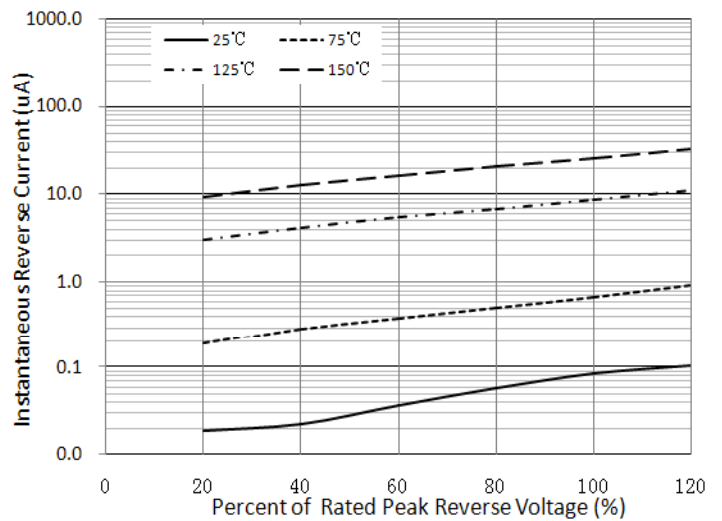
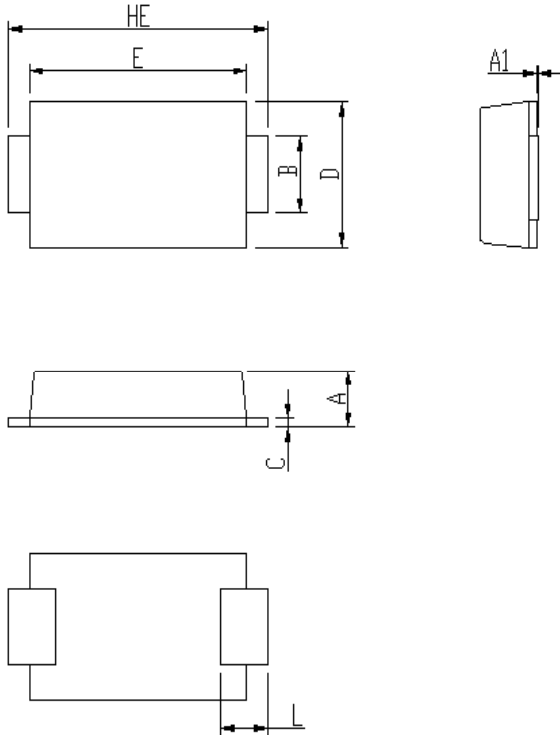


Figure 4. Typical Reverse Characteristics

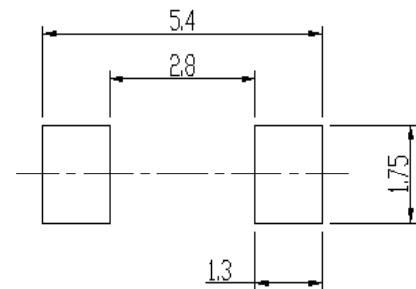
Package Outline Dimensions

eSGB (SMAF)



DIM	Unit: mm		Unit: inch	
	MIN	MAX	MIN	MAX
A	0.92	1.08	0.036	0.043
A1	0	0.1	0.000	0.004
B	1.25	1.45	0.049	0.057
C	0.1	0.25	0.004	0.010
D	2.6	2.8	0.102	0.110
E	4.1	4.3	0.161	0.169
L	0.7	1.1	0.028	0.043
HE	4.8	5.2	0.189	0.205

Soldering footprint



Packing Information

Packing quantities:

3000 pcs/Reel, 12mm Tape, 13" Reel

Tape & Reel Specification

