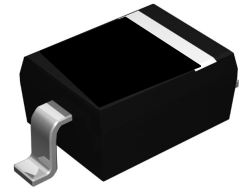
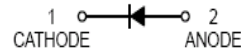


Features

- Small signal switching diode
- For general purpose
- RoHS compliant



SOD-323

Absolute Maximum Ratings

(T_A=25°C unless otherwise noted)

Parameter	Symbol	BAV19WS	BAV20WS	BAV21WS	Unit
Repetitive Peak Reverse Voltage	V _{RRM}	120	200	250	V
Working Peak Reverse Voltage DC Blocking Voltage	V _{RWM} V _R	100	150	200	V
RMS Reverse Voltage	V _{R(RMS)}	71	106	141	V
Forward Continuous Current	I _{FM}	400			mA
Average Rectified Output Current	I _o	200			mA
Non-Repetitive Peak Forward Surge Current	I _{FSM}	2.5 @t=1.0ms			A
		0.5 @t=1.0s			A
Power Dissipation	P _D	200			mW
Thermal Resistance Junction to Ambient Air	R _{θJA}	500			°C/W
Operating and Storage Temperature Range	T _J , T _{STG}	-65 to +150			°C

Electrical Characteristics

(T_A=25°C unless otherwise noted)

Parameter	Symbol	Test Condition	Rating		Unit
			Min	Max	
Reverse Breakdown Voltage	V _{(BR)R}	I _R =100uA	BAV19WS	120	V
			BAV20WS	200	
			BAV21WS	250	
Forward Voltage	V _{FM}	I _F =100mA		1.0	V
		I _F =200mA		1.25	V
Peak Reverse Current @ Rated DC Blocking Voltage	I _{RM}	T _J =25°C V _R =V _{RWM}		100	nA
		T _J =100°C V _R =V _{RWM}		15	uA
Reverse Recovery Time	t _{rr}	I _F =I _R =30mA, I _{rr} =0.1xI _R , R _i =100Ω		50	ns
Total Capacitance	C _T	V _R =0, f=1.0MHz		5.0	pF

Typical Electrical Characteristic Curves

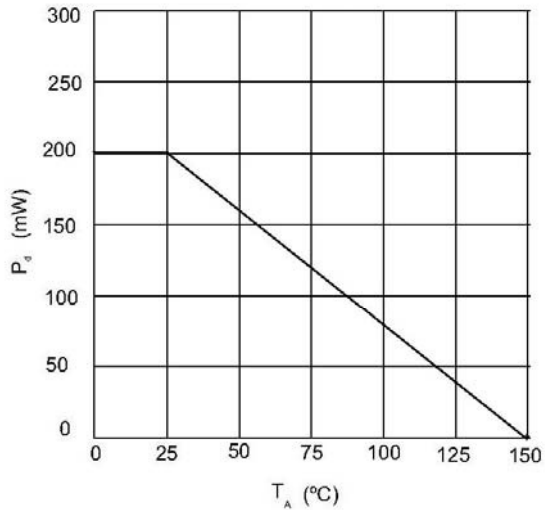


Figure 1. Power Dissipation

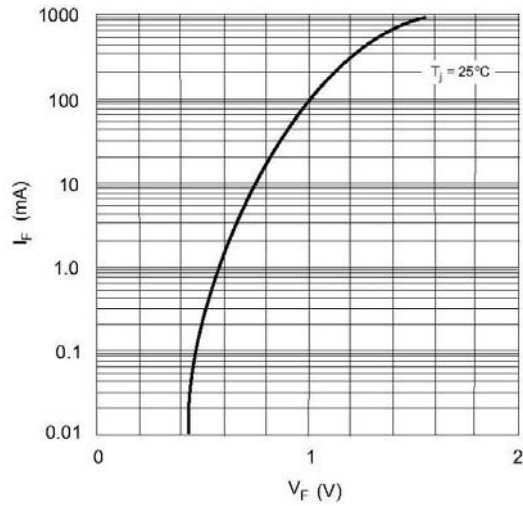


Figure 2. Forward Voltage

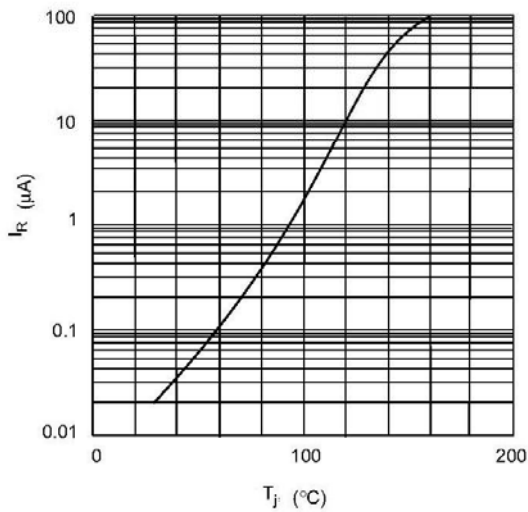
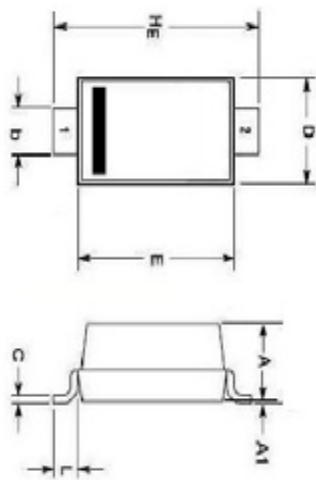


Figure 3. Reverse Leakage

Package Outline Dimensions

SOD-323



mm

	SOD-323	
	min	max
A	0.80	1.00
A1	0.00	0.10
b	0.25	0.40
C	0.089	0.177
D	1.15	1.35
E	1.60	1.80
He	2.30	2.70
L	0.20	0.40

PIN: 1. CATHODE 2. ANODE